



**Reward
Hospitality**

T&S BRASS AND BRONZE WORKS, INC.

www.rewardhospitality.com.au

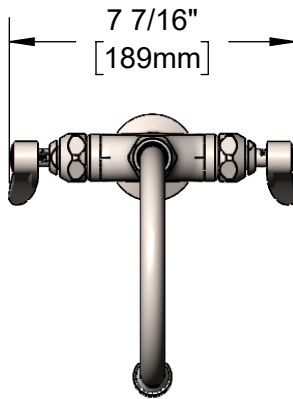
Model No.

AS-0300-V20

Item No.

4710001

EVERSTEEL



This Space for Architect/Engineer Approval

Job Name _____ Date _____

Model Specified _____ Quantity _____

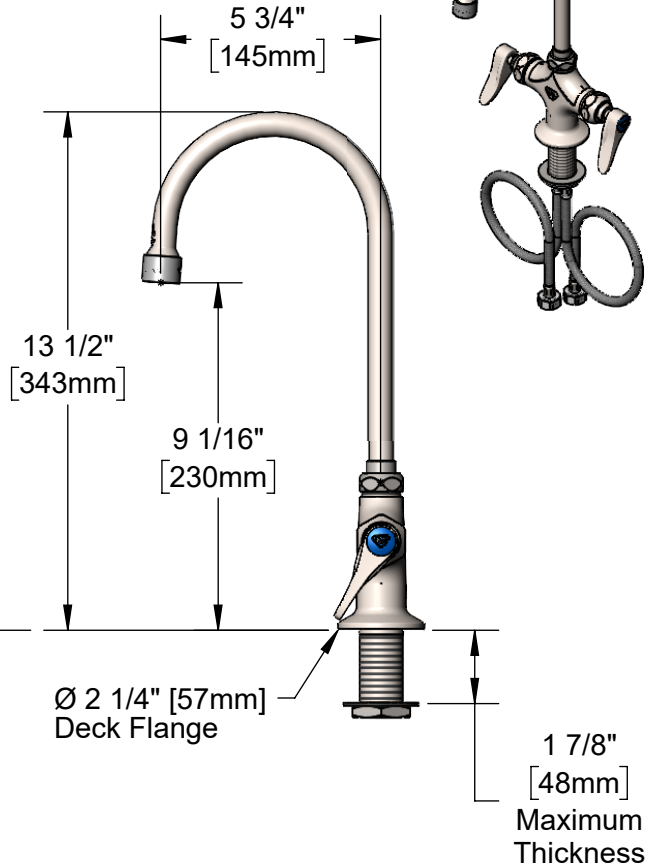
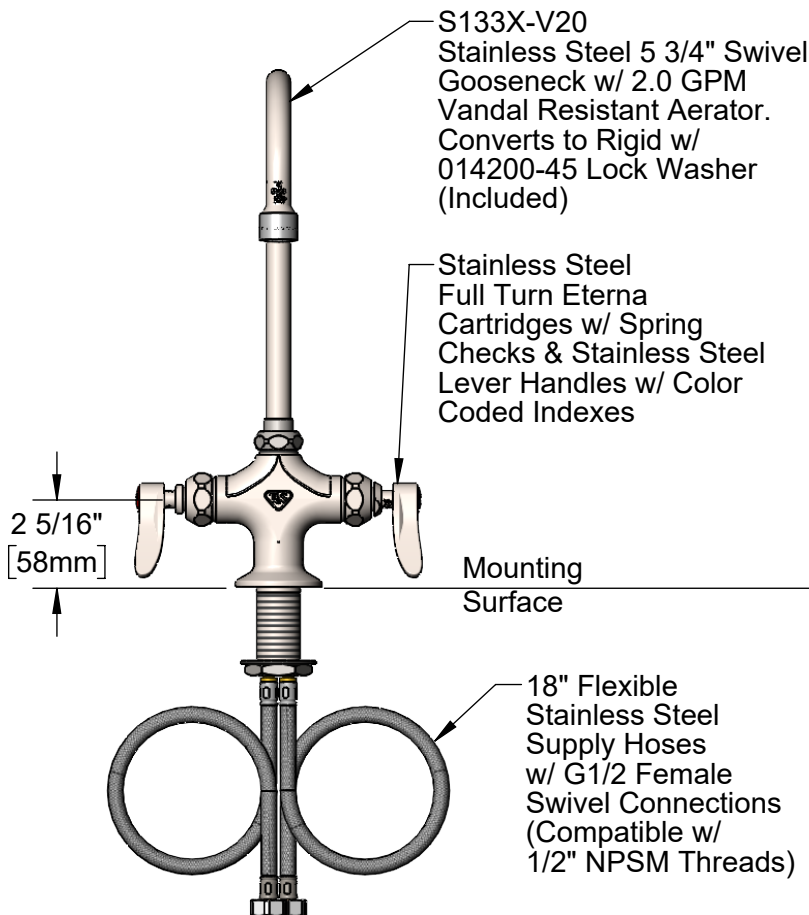
Customer/Wholesaler _____

Contractor _____

Architect/Engineer _____



ADA Compliant



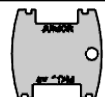
Rough-In Requirement:
Ø 1 1/2" [38mm] Mounting Hole

Product Specifications:

Single Hole Stainless Steel Deck Mount Mixing Faucet, SS Full Turn Eterna Cartridges w/ Spring Checks, SS Lever Handles, SS Swivel/Rigid Gooseneck w/ 2.0 GPM VR Aerator & 18" Flexible Stainless Steel Supply Hoses w/ G1/2 Female Connections (Compatible w/ 1/2" NPSM Threads)

Product Compliance:

ASME A112.18.1 / CSA B125.1
NSF 61 - Section 9
NSF 372 (Low Lead Content)
ANSI A117.1 (ADA)
AS/NZ WaterMark / WELS



**015425-45
Vandal Resistant Key
(Included)**

Drawn: KJG Checked: JRM Approved: JHB Date: 05/22/24 Scale: 1:5 Sheet: 1 of 2



**Reward
Hospitality**

T&S BRASS AND BRONZE WORKS, INC.

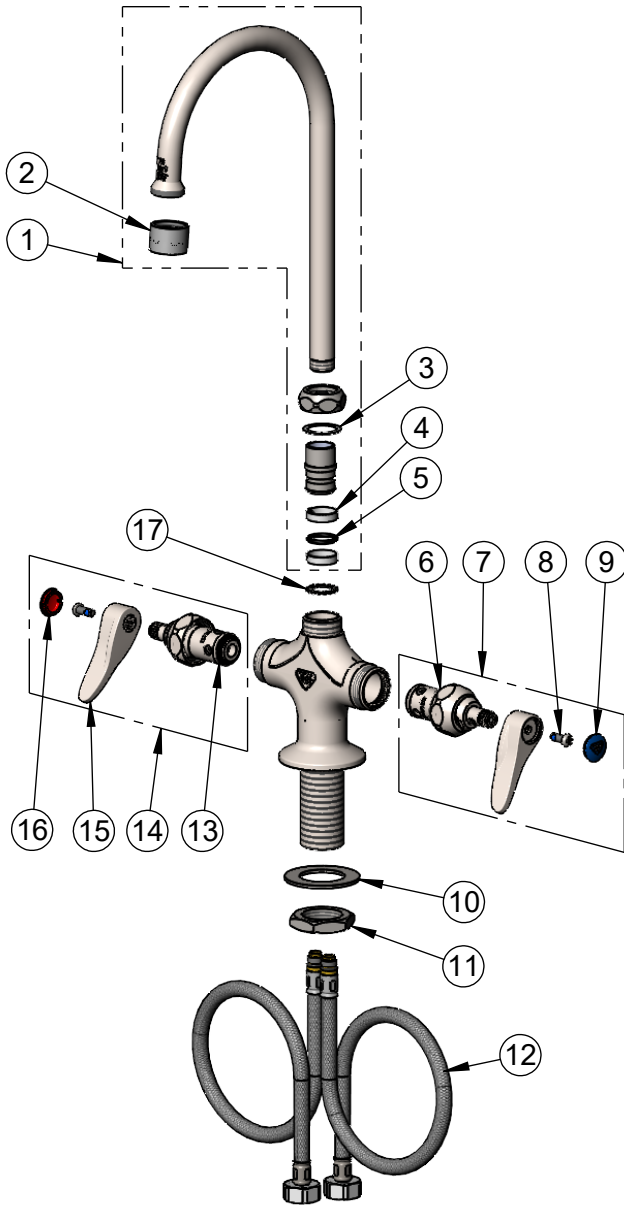
www.rewardhospitality.com.au

Model No.

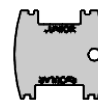
AS-0300-V20

Item No.

4710001



ITEM NO.	SALES NO.	DESCRIPTION
1	S133X-V20	SS 5 3/4" Swivel Gooseneck w/ 2.0 GPM VR Aerator
2	S-0199-06-F20	VR 2.0 GPM [7.6 L/min] Aerator, 55/64-27 Female w/ Key
3	009538-45	Swivel Washer
4	021087-45	Swivel Sleeves (2)
5	001074-45	O-Ring
6	S012442-30FT	SS Full Turn Eterna Cartridge w/ Spring Check, LTC
7	S002711-30FT	SS Full Turn Eterna Cartridge w/ Spring Check, Handle, Blue Index & Screw, LTC
8	000925-45	Lab Handle Screw
9	018506-19NS	Blue Button Index, Press-in
10	S007365-20	SS Lock Washer
11	S000965-20	SS Lock Nut
12	012436-45DR	Flexible Connector Hose
13	S012443-30FT	SS Full Turn Eterna Cartridge w/ Spring Check, RTC
14	S002712-30FT	SS Full Turn Eterna Cartridge w/ Spring Check, Handle, Red Index & Screw, RTC
15	S001638-30NS	Lever Handle (New Style)
16	001193-19NS	Red Button Index, Press-in
17	014200-45	Star Washer, Anti-Rotation



015425-45
Vandal Resistant Key
(Included)

Product Specifications:

Single Hole Stainless Steel Deck Mount Mixing Faucet, SS Full Turn Eterna Cartridges w/ Spring Checks, SS Lever Handles, SS Swivel/Rigid Gooseneck w/ 2.0 GPM VR Aerator & 18" Flexible Stainless Steel Supply Hoses w/ G1/2 Female Connections (Compatible w/ 1/2" NPSM Threads)

Product Compliance:

ASME A112.18.1 / CSA B125.1
NSF 61 - Section 9
NSF 372 (Low Lead Content)
ANSI A117.1 (ADA)
AS/NZ WaterMark / WELS